

MAMMALS LIVING IN RUAHA NATIONAL PARK



THIS POSTER SHOWS SOME OF THE MAMMALS LIVING IN RUAHA NATIONAL PARK. EACH MAMMAL IS LABELLED WITH THE ENGLISH AND KISWAHILI NAME.



CHAMELEON | KINYONGA



HYRAX | PIMBI



PANGOLIN | KAKAKUONA



BAT EARED FOX | BWEHA MASIKIO



MONGOOSE | NGUCHIRO



JACKAL | BWEHA



PORCUPINE | NUNGU-NUNGU



SERVAL CAT | MONDO



VERVET MONKEY | TUMBILI



WILD DOG | MBWA MWITU



WARTHOG | NGIRI



ZEBRA | PUNDA MILIA



HYENA | FISI



GIRAFFE | TWIGA



LEOPARD | CHUI



ELEPHANT | TEMBO



HIPPO | KIBOKO



CROCODILE | MAMBA



CHEETAH | DUMA



LION | SIMBA



BUFFALO | NYATI



LESSER KUDU | TANDALA MDOGO



GREATER KUDU | TANDALA MKUBWA



WATERBUCK | KURO



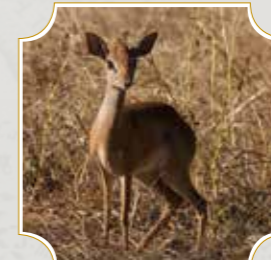
SABLE ANTELOPE | PALAHALA



ELAND | POFU



IMPALA | SWALA PALA



DIKDIK | DIGIDIGI



KLIPSPRINGER | MBUZI MAWE



ROAN ANTELOPE | KORONGO



HARTEBEEST | KONGONI



REEDBUCK | TOHE



GRANT'S GAZELLE | SWALA GRANTI



AARDVARK | MUHANGA



AGAMA LIZARD | MJUSI KAFIRI



MONITOR LIZARD | KENGE